

Trimble EdgeWise Software

For today's contractors, dense 3D scan data provides a wealth of data about existing site conditions and as-built reporting. However, for many in the construction industry the time and skill required to create actionable deliverables makes 3D scanning an underutilized asset on many building construction jobs. Introducing Trimble® EdgeWise software, a smart modeling and analysis tool that dramatically reduces the time required to accurately transform point cloud data into actionable models of the worksite.

EdgeWise complements Trimble's 3D scanners and RealWorks software to provide efficient end-to-end workflows in producing accurate BIM-ready models. From scanned point cloud data, the software automatically detects structural elements such as pipes, conduit and beams, then precisely models them using the dimensions and geometries included in a vast library of common elements.

FLEXIBILITY FOR THE CONTRACTOR

Projects vary as do your scanning needs. Whether you are looking to provide as-built information or collecting current conditions for a renovation project, Trimble EdgeWise can help you extract the individual elements and produce the information you need to make decisions. Automated routines enable you to quickly and intelligently extract and model piping, duct, conduit, walls, structural beams or other elements to be exported to your modeling platform of choice.

FINISHING & QA TOOLS

EdgeWise quality assurance tools allow you to check the accuracy of every extracted element to ensure your model is true to the point cloud. Any poorly-fitted object can be easily and quickly resized and adjusted to the points to give you precise control and accuracy of your model. The advanced modeling methodology in the software allows you to efficiently extract and precisely position every object of interest.

Objects and features extracted, modeled and finished in EdgeWise are easily imported into Vico Office, Tekla, SketchUp, Bentley or Revit as fully functional families while maintaining associated attribute data.

Key Features:

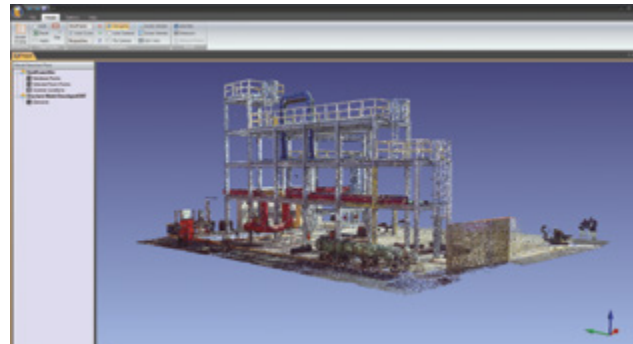
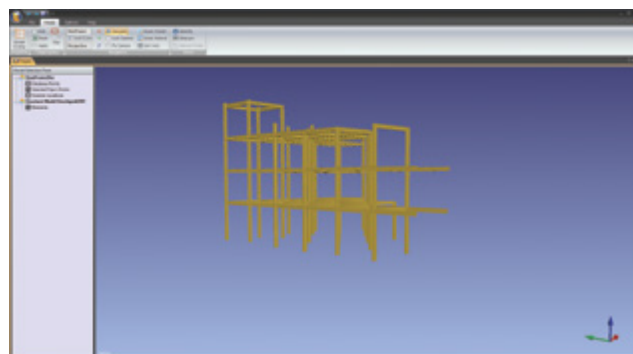
- Reduce modeling time by up to 50%
- Improve speed and accuracy when extracting piping, conduit, duct, walls, windows, doors, structural beams and other repeated objects
- Model with industry-standard libraries to create intelligent BIM models
- Smart quality assurance tools to ensure accuracy of your model



SYSTEM REQUIREMENTS

EDGEWISE SYSTEM REQUIREMENTS

- Operating System Microsoft® Windows® 8;
 Microsoft Windows 7 including Enterprise, Ultimate,
 Professional, or Home Premium edition;
 Microsoft Windows Vista (SP2 or later) including
 Enterprise, Business, Ultimate
- Processor 64-bit, dual-core processor
- Memory 6 GB RAM
- Graphics Card OpenGL accelerated graphics card with
 minimum 1 gigabyte of memory
- Disk Space 2 GB free disk space for installation



Specifications subject to change without notice.

© 2015, Trimble Navigation Limited. All rights reserved. Trimble and the Globe & Triangle logo are trademarks of Trimble Navigation Limited, registered in the United States and in other countries. Microsoft and Windows are either registered trademarks or trademarks of Microsoft Corporation in the United States and/or other countries. All other trademarks are the property of their respective owners. PN 022519-153 (10/15)

Building Point Ohio Valley
 1120 Ohioview Avenue | Ambridge, PA 15003
 724-266-1600 | info@bpohiovalley.com

TRIMBLE AUTHORIZED DISTRIBUTION PARTNER

NORTH AMERICA
 Trimble Navigation Limited
 10368 Westmoor Drive
 Westminster, CO 80021
 1.916.294.2000

EUROPE
 Trimble Germany GmbH
 Am Prime Parc 11
 65479 Raunheim
 Germany



<http://buildings.trimble.com>