



QML800/QML800G QuickMark Layout

NEW!



**The 1st Tap 'n Go
Interior Layout System**



FAST
ACCURATE
EASY TO USE

BuildingPoint™
Ohio Valley

WWW.BUILDINGPOINTOHIOVALLEY.COM

1120 Ohioview Avenue | Ambridge, PA 15003

724.266.1600 | RSC@bpohiovalley.com

QML800/800G

QML800 / QML800G

The QuickMark Layout is a completely new way to do interior layout. The system uses 2 laser beams that literally mark a visible "X" at the desired point location. The user simply taps the desired point on the tablet controller – the lasers position the X at that location on the floor and ceiling. Complicated layout shapes such as arcs and multi-layered serpentine soffits are easy to layout. The lasers are controlled by an intuitive Android tablet application. Set up is accomplished through a quick process of locating 2 known control points on the job sites.

The QML800 uses red beam lasers and the QML800G uses high visibility green beam lasers.

New BuildView Field Software

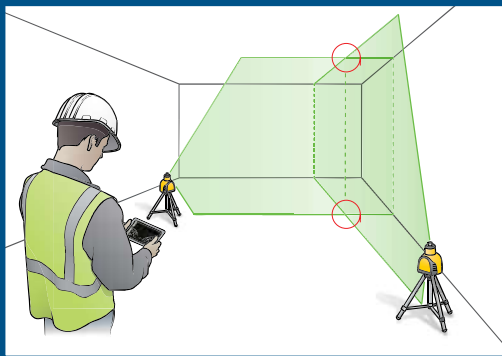
With the QML800, architectural files can now be loaded directly onto the tablet. The floor plan can be viewed in the BuildView field software. Locating a point on the floor is as simple as tapping on the desired intersection or point on the drawing. BuildView is powerful, fast and simple to use.

BuildView Office Software

QML800 also includes license to BuildView Office computer software. Architectural drawings can be opened and viewed in this program. Job files can be reviewed for completeness - issues addressed with the architects, general contractors and contract managers before arriving at the job site. A more productive first day of layout will follow.

No Measuring

- Eliminate calculations and tape reading errors
- Marking errors are not compounded since points are successive points are not measured from previous points
- Complex shapes such as serpentine soffits and curved walls are easy and quick to layout



Columns are Effectively Invisible

QML800 includes a clever “Column Buster” function that provides quick work around when columns are in the way. Columns no longer block location points.

Numerous Applications

System is ideal for drywall contractors, MEP contractors, general contractors, construction managers and architects. Other layout tasks including warehouse racking, factories, office walls / cubicle layout is also enhanced.

Work Around Clutter

Clutter and pallets of material on the job site floor are a challenge for the layout crew. Our Clutter Buster accessory (in option on QML800) enables layout specialists to capture the laser X above the clutter and translate the point to the floor with a laser plumb pointer. The Clutter Buster accessory is standard in the QML800G package and optional for the QML800.



Job Results - Typical Jobsite



56%

Reduction in labor hours



1 Day

Layout complete instead of 3-4 allowing contractor to make more profit on the job



Eliminate Errors

Marking errors not carried forward



1/8" Accuracy

Across the entire floor



1200+ Linear Feet per Day

By typical two person crew with minimal training



In & Out

Before other trades start blocking working space

QML800 / QML800G Technical Specifications

Lasers

- Accuracy: 3 mm (1/8") typical
- Self-leveling range: $4^{\circ} \pm 1^{\circ}$ from true level
- Working range
 - Typical work area:
 - 800: 30m x 30m (100ft x 100ft)
 - 800G: 40m x 40m (130ft x 130ft)
 - Visible distance:
 - 800: 22m (70ft)
 - 800G: 30m (100ft)
- Battery
 - Type and rating:
 - Lithium ion, 5200 mAh, 3.7 V
 - Operating time: 16 hrs red, 10 hrs green
 - Charge time: 10 hrs
- Laser Class: Class II, less than 1 mW
- Laser Type: 522 - 635 nm
- Environmental
 - IP: IP54
 - Operating temp:
 - 10°C - 45°C (14°F - 113°F)
 - Storage temp: 20°C - 60°C (-4°F - 140°F)
- Size
 - Laser instrument: 700 x 445 x 254mm (28 x 18 x 10 in)
- Weight
 - Laser instrument: 2.7 kg (6 lbs)

Controller

- Size Screen:
 - 800: 7 inch (178mm) diagonal
 - 800G: 8 inch (203mm) diagonal
- Wireless
 - Protocol: IEEE 802.11b/g/n
 - Frequency: 2.4 - 2.497 GHz
 - Range (typical): 35m (120 ft)
- Protective case included

Tripods

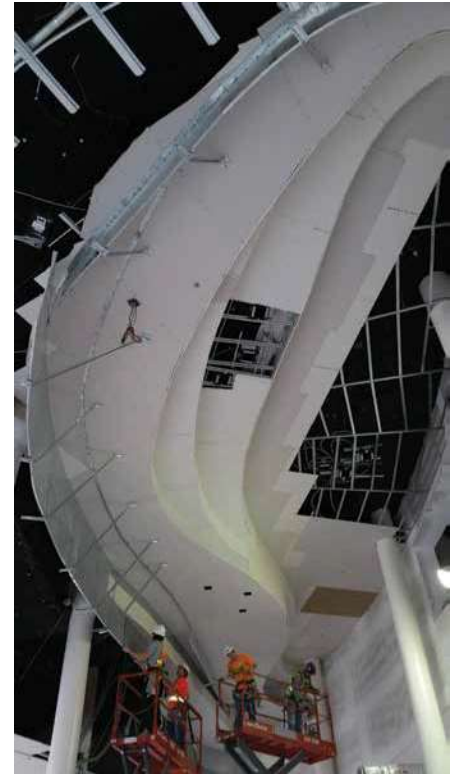
- Height: 0.48m - 0.84m (19 in to 33 in)
- Attachment thread 5/8 x 11

LP30 (800)

- Level/Up Beam Accuracy:
 - ± 1.5 mm @ 5 m ($\pm 1/16$ in. @ 17 ft)
- Down Beam Accuracy:
 - ± 1.0 mm @ 0.5 m ($\pm 1/16$ in. @ 1.7 ft)
- Self-Leveling Range: $\pm 4^{\circ}$ from level

LP20G (800G)

- Level/Up Beam Accuracy:
 - ± 1.0 mm @ 5 m ($\pm 1/32$ in. @ 17 ft)
- Down Beam Accuracy:
 - ± 1.0 mm @ 2.5 m ($\pm 1/32$ in. @ 8 ft)
- Self-Leveling Range: $\pm 4^{\circ}$ from level



Layout complex shapes quickly and accurately



The QML800 all-inclusive package consists of 2 red beam lasers, 2 tripods with canvas bag, 7" controller, LP30 pointer and beam interceptor, chargers, laser enhancement glasses, carrying case and instructions



The QML800G all-inclusive package consists of 2 green beam lasers, 2 tripods with canvas bag, 8" controller, LP20G green beam pointer and beam interceptor with white and green targets, clutter buster, chargers, laser enhancement glasses, rolling carrying case and instructions



To locate your nearest distributor, visit www.spectralasers.com. Specifications and descriptions are subject to change without notice. Please visit www.spectralasers.com for the latest product information.

©2015 Trimble Navigation Limited. All rights reserved. Spectra Precision is a Division of Trimble Navigation Limited. Spectra Precision and the Spectra Precision logo are trademarks of Trimble Navigation Limited or its subsidiaries. All other trademarks are the property of their respective owners.

PN 022507-390C (04/2016)